



Capitalizing on Coastal Blue Carbon

The Conference Center at Massasoit Community College | May 12-13, 2015



Hands On
Learning -
Mini
Session

**Innovations in Science and Field Work
from the BWM Project and Additional
Science Questions**

Objectives

- Share team experiences with innovative techniques and instrumentation used in the BWM project
- Respond to *your* questions about our field work
- Discuss ideas for future related research



Boardwalk



In-situ GHG vertical & lateral flux analyzers

Laser-based absorption technology



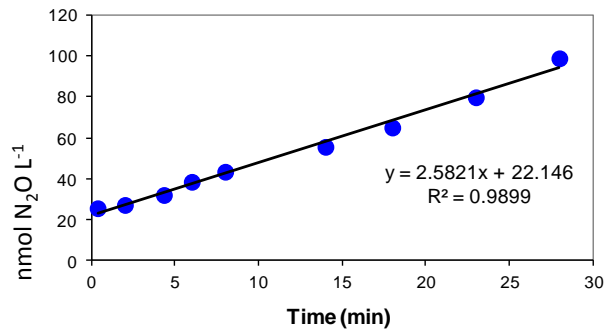
Picarro G2301: CO₂, CH₄



Los Gatos Research
N₂O, CO

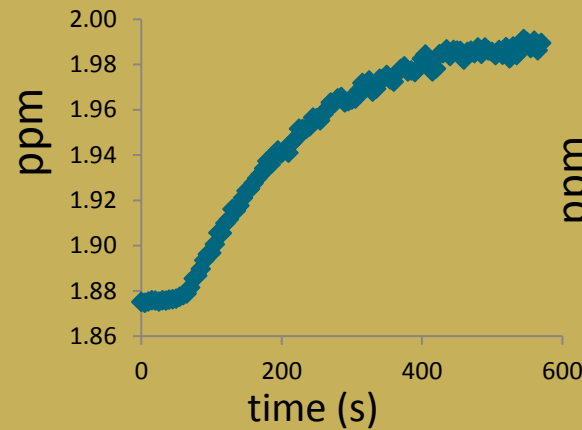
New analyzer for greenhouse gases

Prior Method (GC-based)

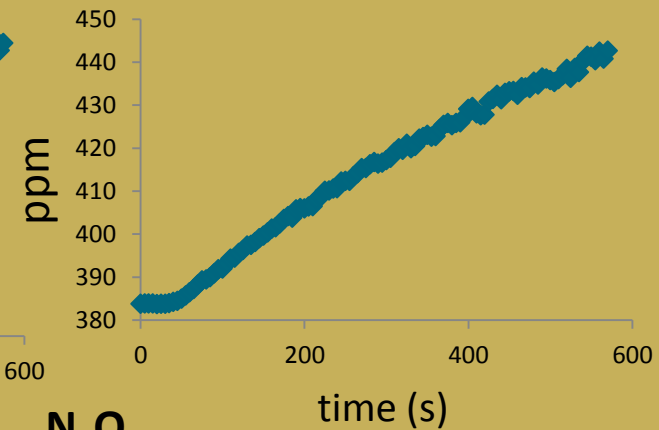


Cavity ring-down spectroscopy

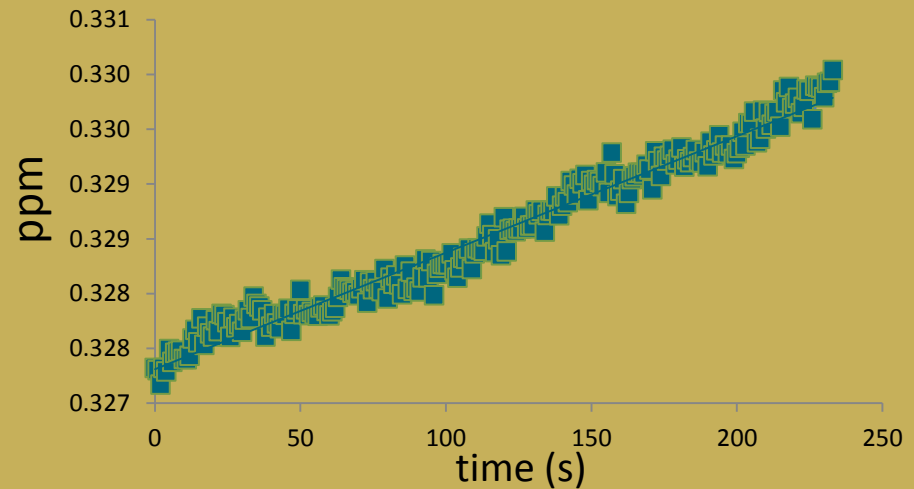
CH_4



CO_2



N_2O



In-situ GHG vertical flux measurements



Flux Chamber



Piccaro & LGR Analyzers

In situ GHG lateral flux measurements



In situ GHG lateral flux measurements



Coring

