



Mapping Stormtide Pathways: A New Flood Mapping and Preparedness Project

Shannon Hulst Jarbeau, CFM
Barnstable County Cape Cod Cooperative Extension &
Woods Hole Sea Grant





Photo: Ptownie

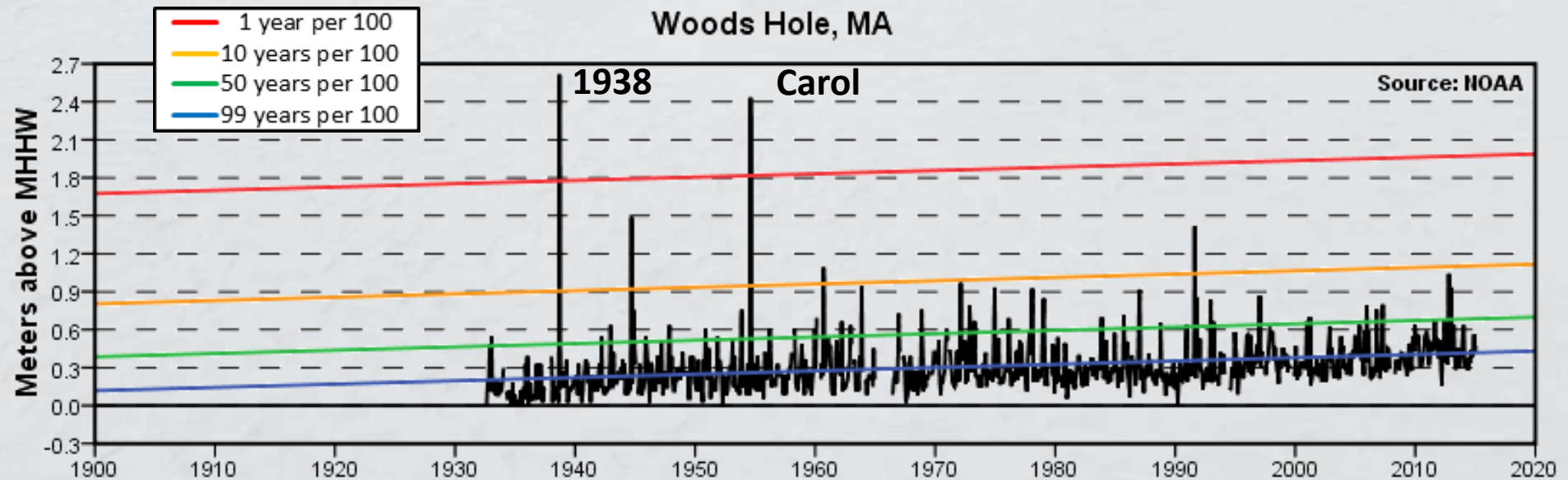


Increased Flooding

“Sunny Day”
Flooding

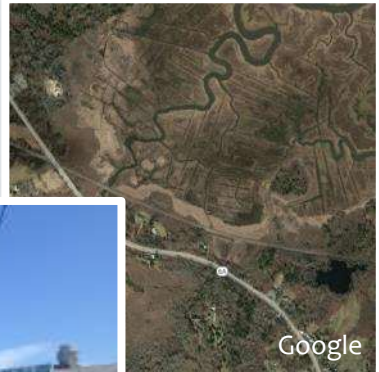


Sea Level
Rise



What is Affected by Flooding?

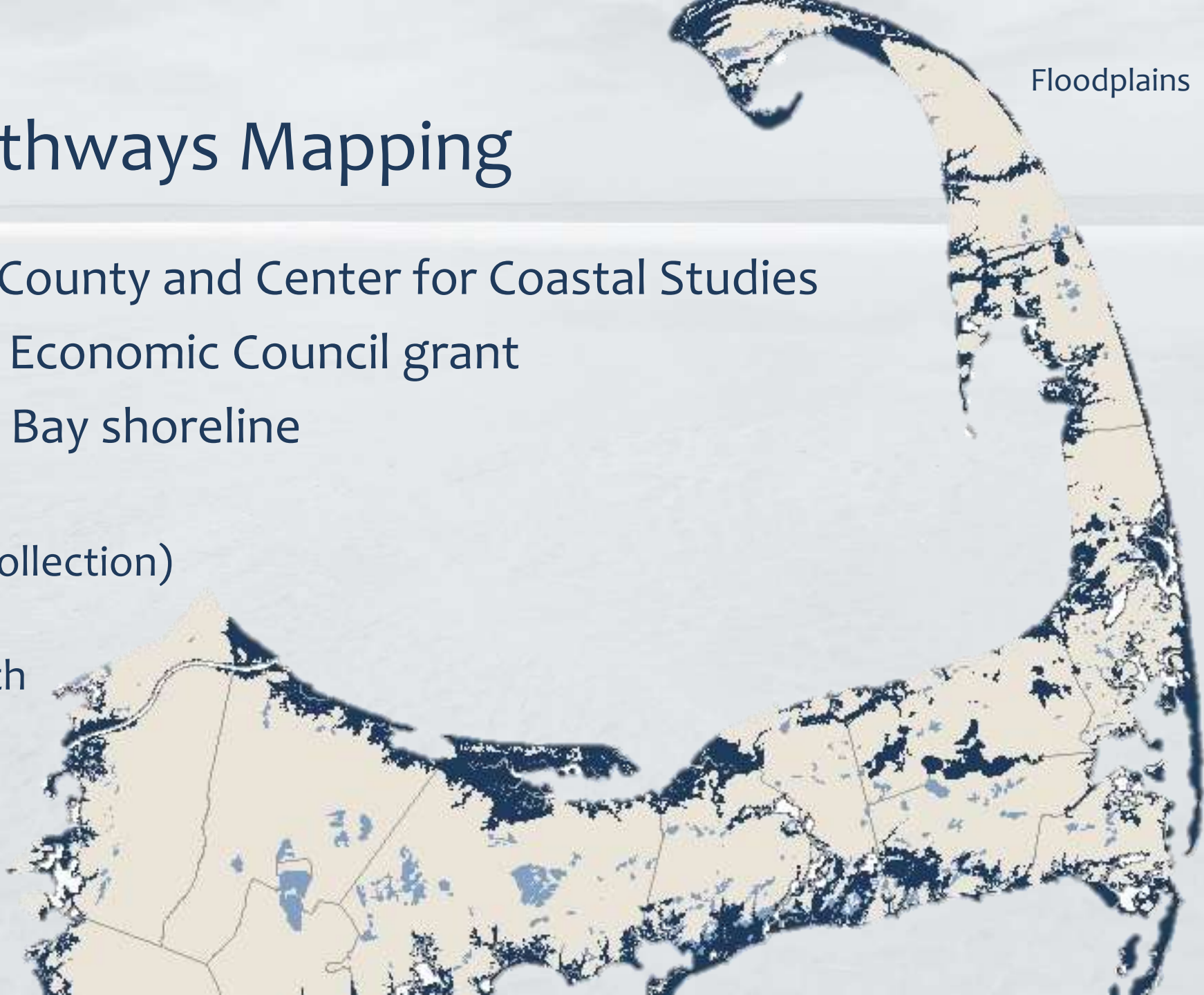
- Infrastructure
- Local and state assets
- \$2 billion value of floodplain parcels (Cape Cod Bay towns)
- Coastal recreation and tourism
- Community character
- Public safety and well-being



Liam Ohman

Stormtide Pathways Mapping

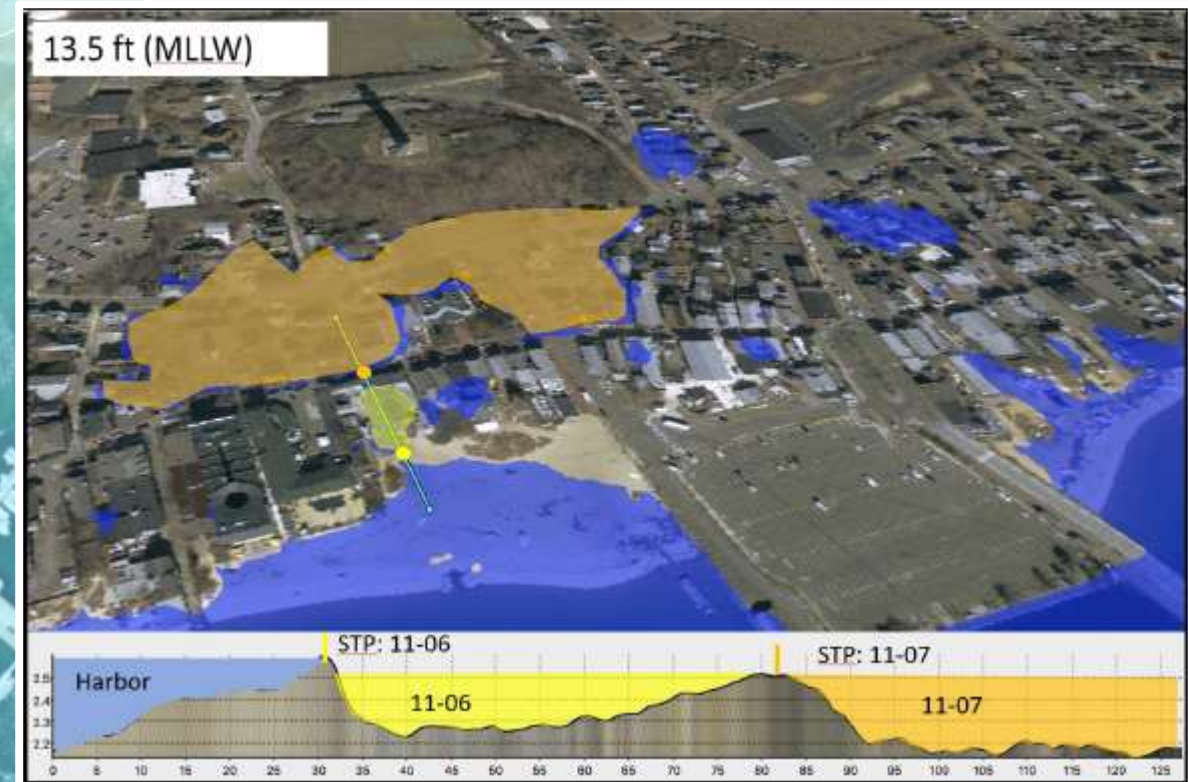
- Who: Barnstable County and Center for Coastal Studies
- Funding: Seaport Economic Council grant
- Where: Cape Cod Bay shoreline
- What:
 - Mapping (data collection)
 - Town outreach
 - Coordination with related projects (let us know!)



Flood Maps vs. Stormtide Pathways Maps

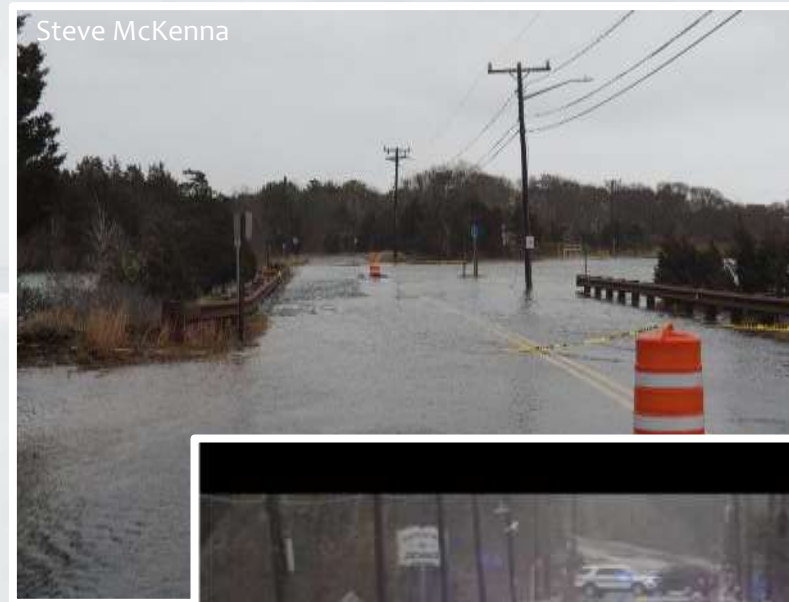


Source: FEMA/ESRI



Mapping Uses

- Emergency response
- Evacuation zones
- Future infrastructure investments
- Planning
 - Coastal flood resilience
 - Hazard mitigation
 - Municipal Vulnerability Preparedness Program (MVP)
- Community Rating System credit



Future Growth

- Seeking funding for remaining Cape Cod coastlines
- Further integration with National Weather Service forecasts?
- Use in municipal planning, spending, and actions
- Other ideas? Let us know!





Thank You!

Shannon.Jarbeau@barnstablecounty.org
(508) 375-6952



Mapping Stormtide Pathways: A New Flood Mapping and Preparedness Project

December 5, 2018

Shannon Jarbeau, Floodplain Specialist

Barnstable County Cape Cod Cooperative
Extension & Woods Hole Sea Grant

**Cape Coastal
Conference**