

Barnstable County Ponds Profile

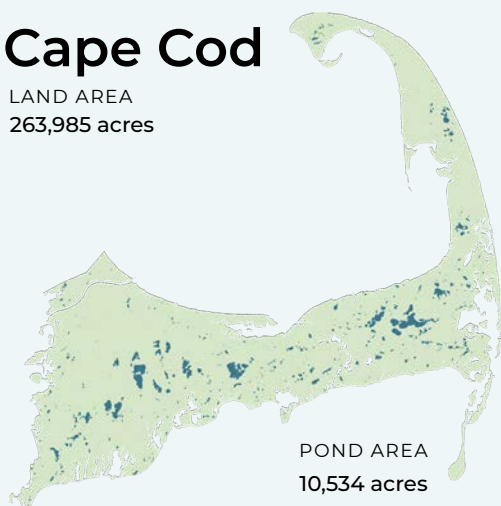
A RESOURCE OF THE CAPE COD FRESHWATER INITIATIVE



Water quality is critical to the vitality of the region's pond ecosystems and coastal embayments. Yet pollutants found in stormwater runoff, and in groundwater by which ponds are recharged, threaten the region's freshwater quality. Understanding the broad issues that impact Cape Cod's freshwater ponds, characteristics of the region's ponds, and actions at the local level all help set a baseline for understanding and action.

Cape Cod

LAND AREA
263,985 acres



4% of total regional area is comprised of freshwater ponds and lakes

890
PONDS

171
10+ Acre
Ponds

395
Named
Ponds

12 ACRES
Average
Pond Size

24 FEET
Average
Pond Depth

27 Fish Stocked
Ponds

107 Ponds Adjacent to
Cranberry Bogs

22 Ponds that Cross
Town Boundaries

96 Ponds with
Public Access

122 State Listed
Great Ponds

14% Impervious Surfaces
in Pond 300ft Buffer

63 Ponds with Coastal
Plain Pondshores

388 Ponds with Rare
Species Habitat

Top 5 Largest Ponds

POND	AREA
1. Long Pond (Brewster)	742.9 acres
2. Mashpee-Wakeby Pond	735.9 acres
3. Wequaquet Lake	673.1 acres
4. Johns Pond	336.7 acres
5. Upper Mill Pond	260.1 acres

Top 5 Deepest Ponds

POND	DEPTH
1. Cliff Pond	88 ft.
2. Ashumet Pond	84 ft.
3. Flax Pond	75 ft.
4. Long Pond (Brewster)	70 ft.
5. Higgins Pond	66 ft.

Pond Monitoring

Of the region's 890 ponds, only 61 have three consecutive years of recent monitoring data and only 24% of all the ponds have available monitoring data. The data record for this monitoring spans 20 years with an average of 1 sampling event every other year at each monitored pond.

218 Ponds Monitored

61 Ponds with 3 Consecutive
Years of Recent Data
(2016-2021)

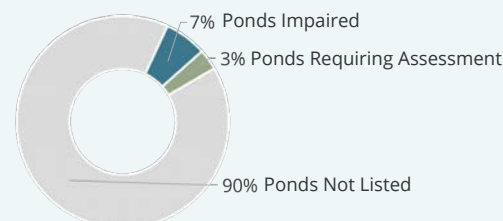
Water Quality Impairments

A lack of consistent and available monitoring data for all ponds means that we may be underestimating threats to waterbody health.

25 Harmful Algal Bloom
Advisories Since 2017
(DPH Reported)

88 Ponds listed on MassDEP's Draft
2022 Integrated List of Waters

25 Freshwater Bathing
Beaches with Sampling
Failures for Fecal Coliform
in 2022

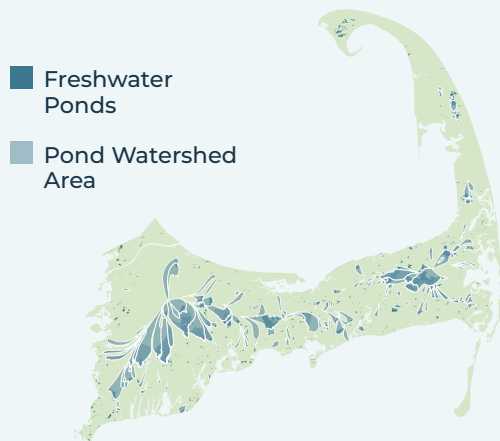
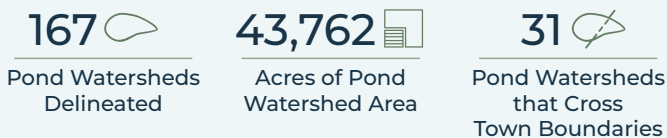


Barnstable County Ponds Profile

A RESOURCE OF THE CAPE COD FRESHWATER INITIATIVE

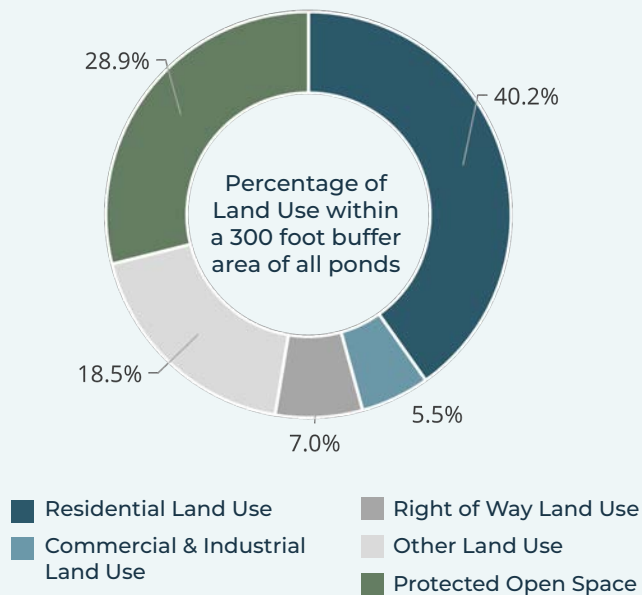
Pond Watersheds

The land area that contributes to freshwater ponds and lakes is referred to as a pond watershed. Relatively few pond watersheds have been delineated across the Cape. Land area within pond watersheds is much larger than the water bodies themselves. On Cape Cod, **17%** of the region's total land area is within a delineated pond watershed.



Land Use in Pond Buffer Area

Understanding the way that land is used around our freshwater ponds contributes to a better understanding of potential pond impacts, stressors, and viable strategies to protect or restore pond health. **17,681** acres (or **7%**) of the region's total land area is within 300 feet of a freshwater pond.

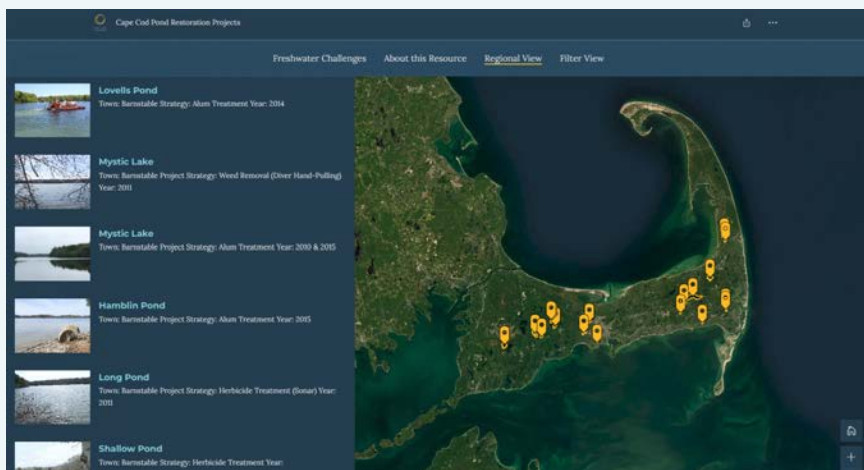


Documented Town Reports and Actions



Local Pond Organizations

Independent groups, organizing around a single or multiple ponds, voluntarily conduct educational and advocacy efforts and collect water quality monitoring data, which is not always available or sufficient for regional analysis.



Pond Strategies Implemented

Updates and additional projects will be added as information becomes available. Review project details at: cccom.link/pond-restoration-projects

