

# 5<sup>TH</sup> ANNUAL CAPE COASTAL CONFERENCE

## Investing in Coastal Ecosystems for Resilient Communities: Lessons from New Jersey

Patricia Doerr

Director of Coastal and Marine Programs

The Nature Conservancy in New Jersey

December 5, 2017







# Ventnor, NJ

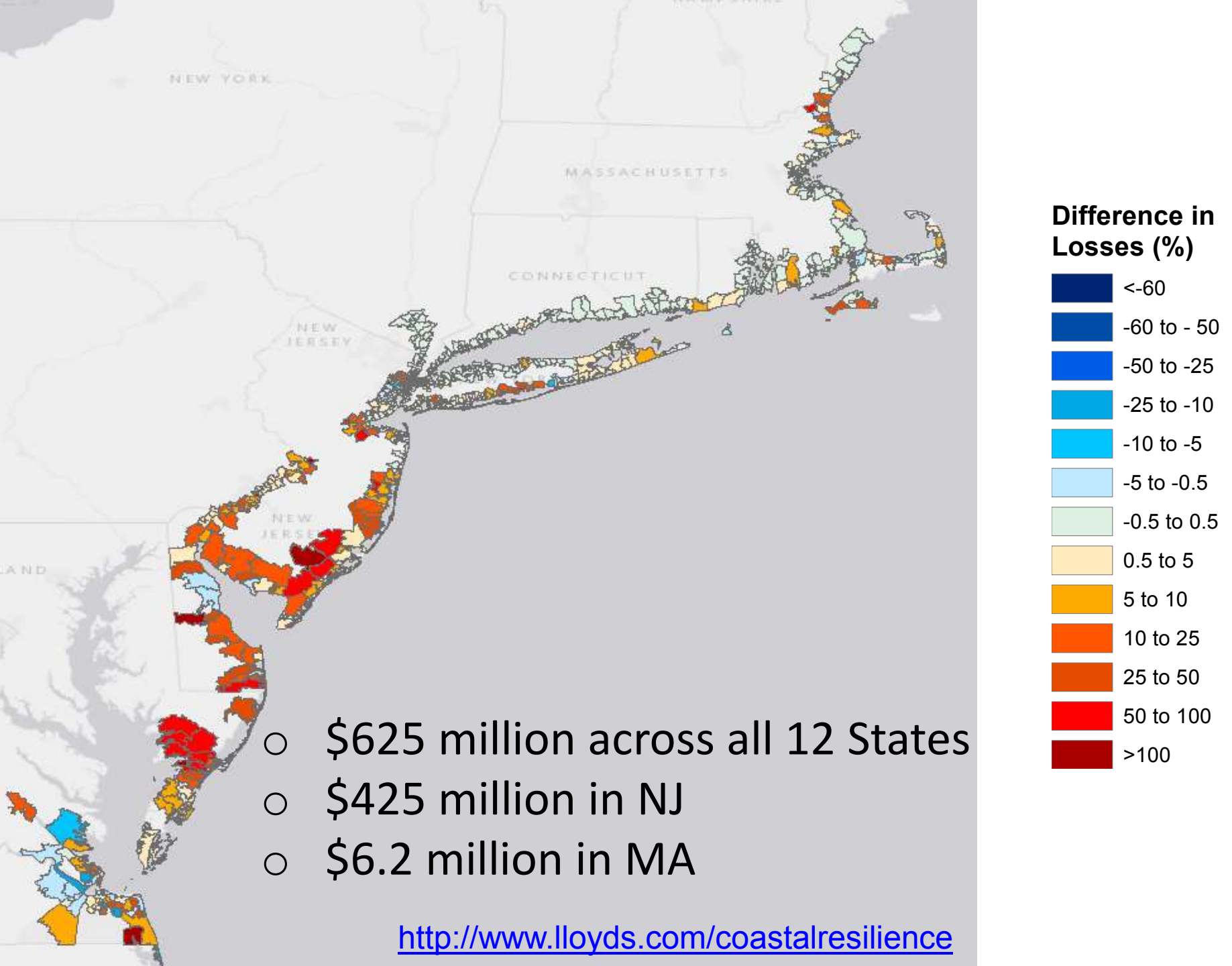
Photo credit: Jim Wright/TNC/LightHawk



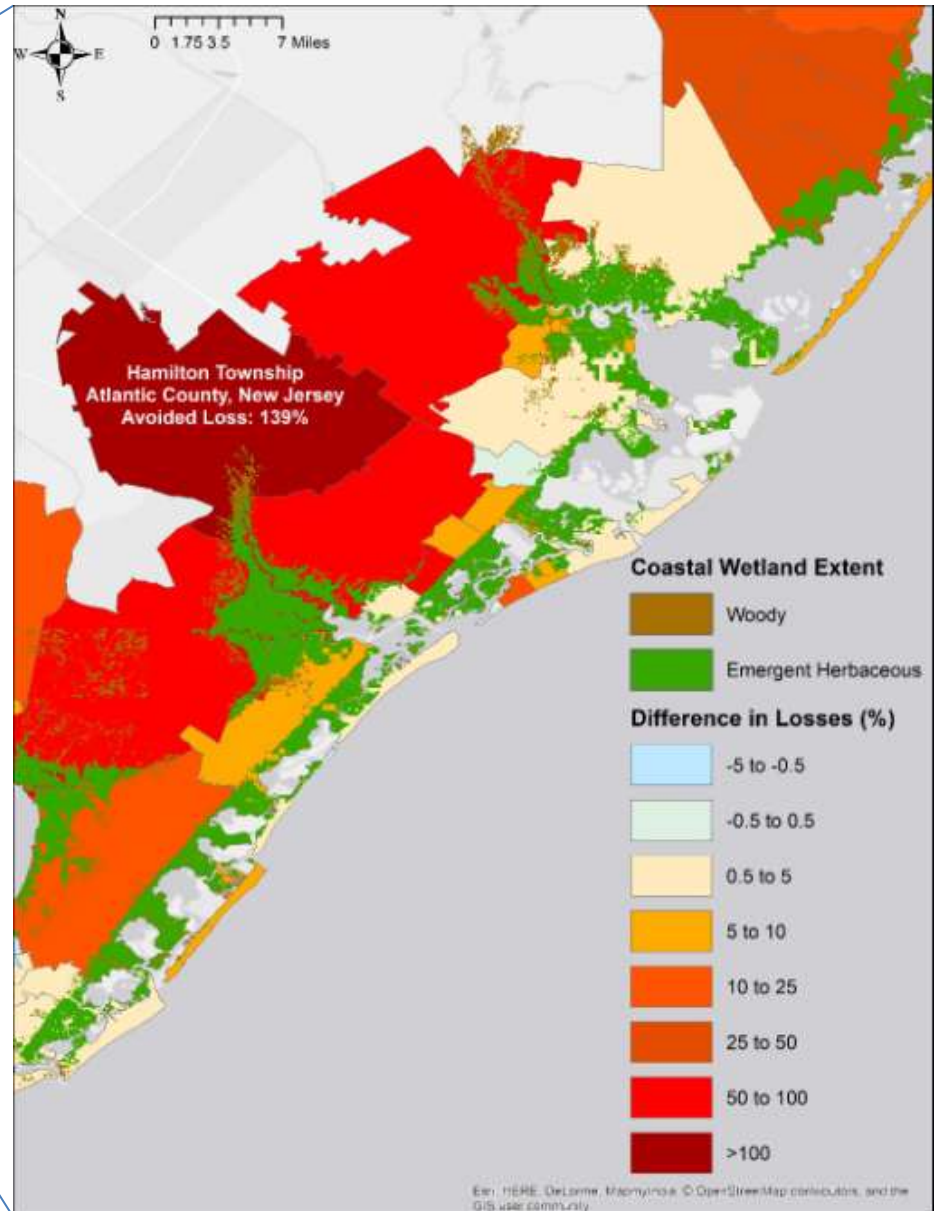
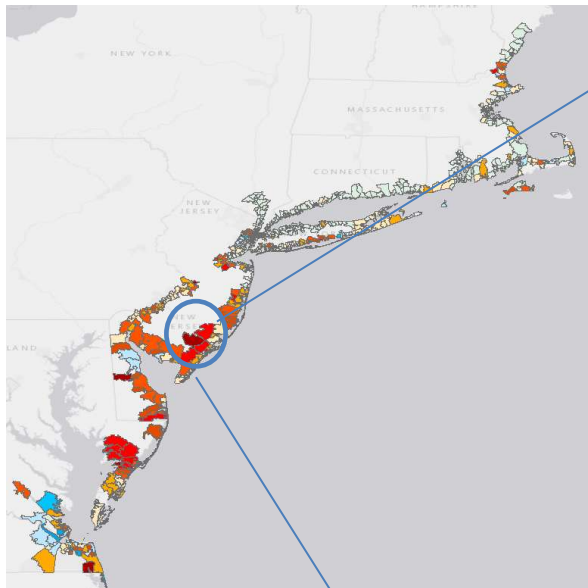


# Linwood, NJ

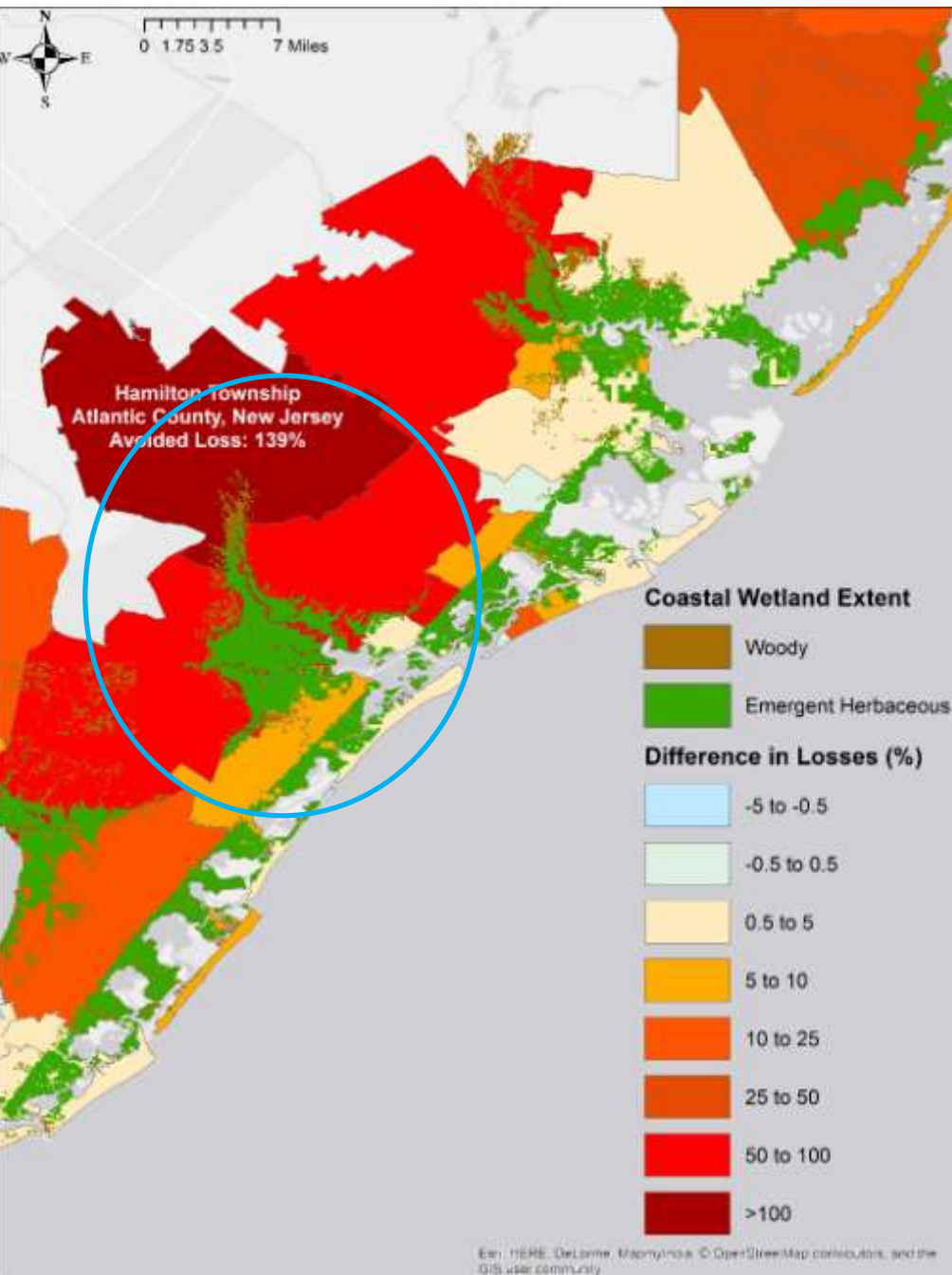
Photo credit: Jim Wright/TNC/LightHawk



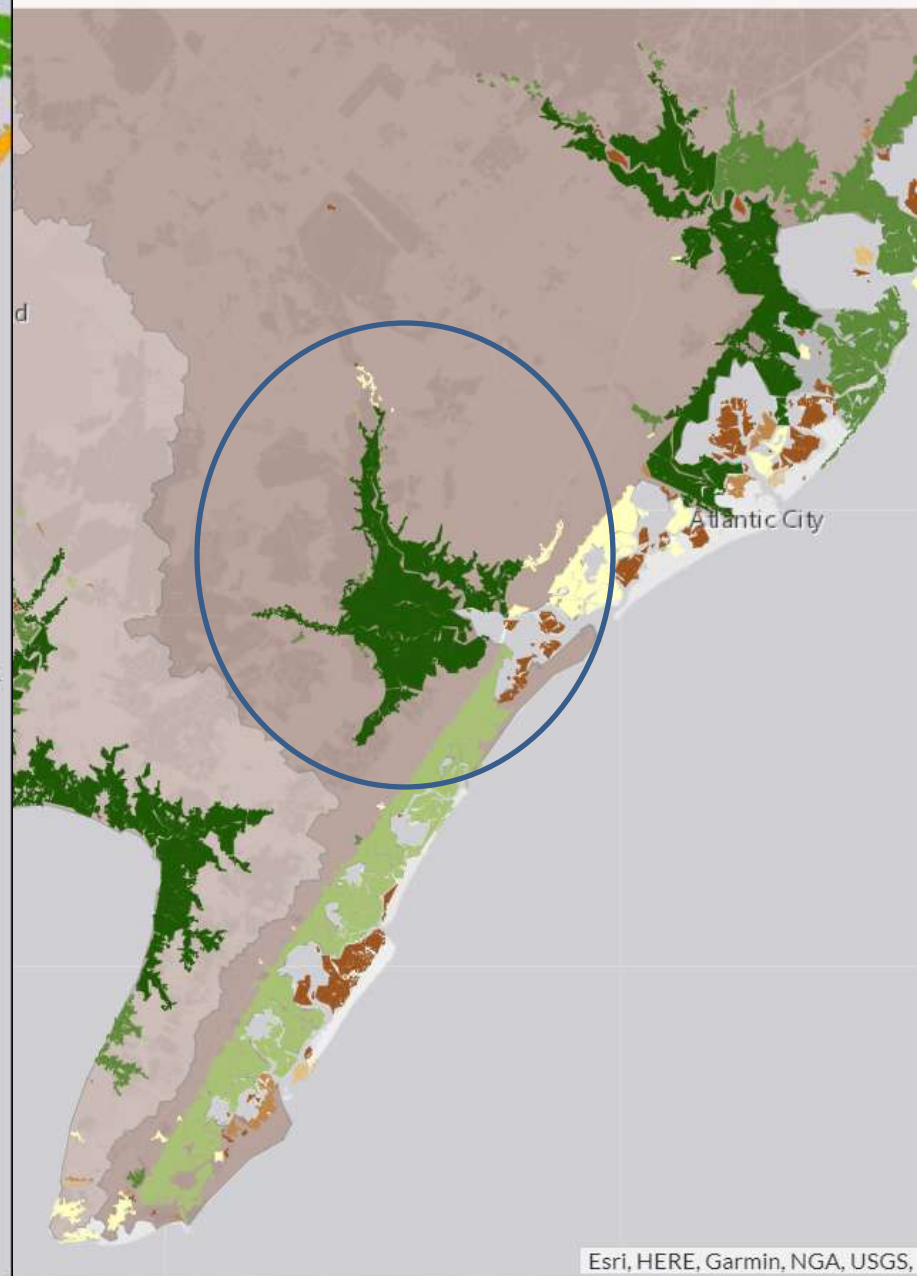
# Landscape-scale effects upstream (Hamilton Township, NJ)

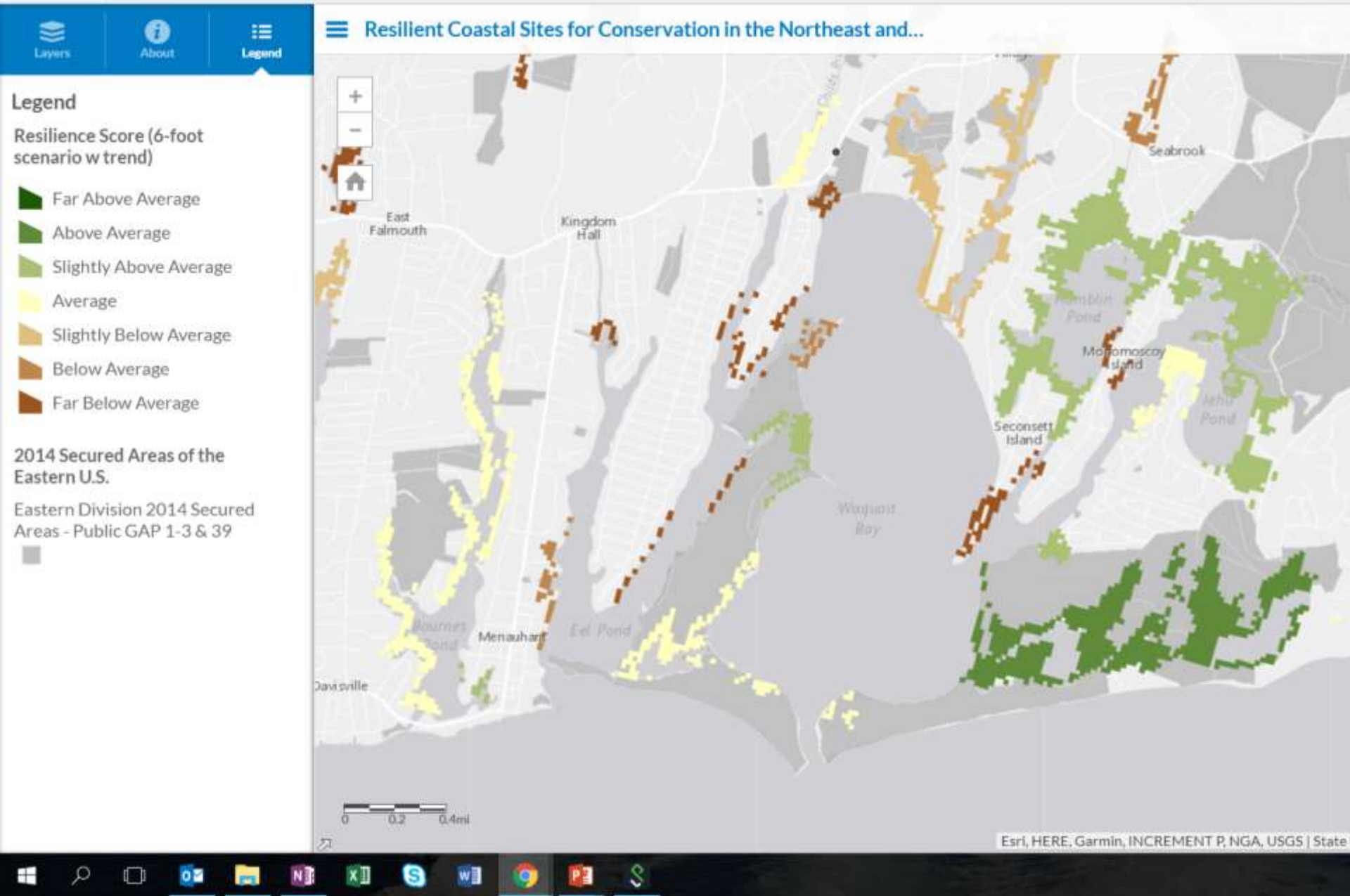




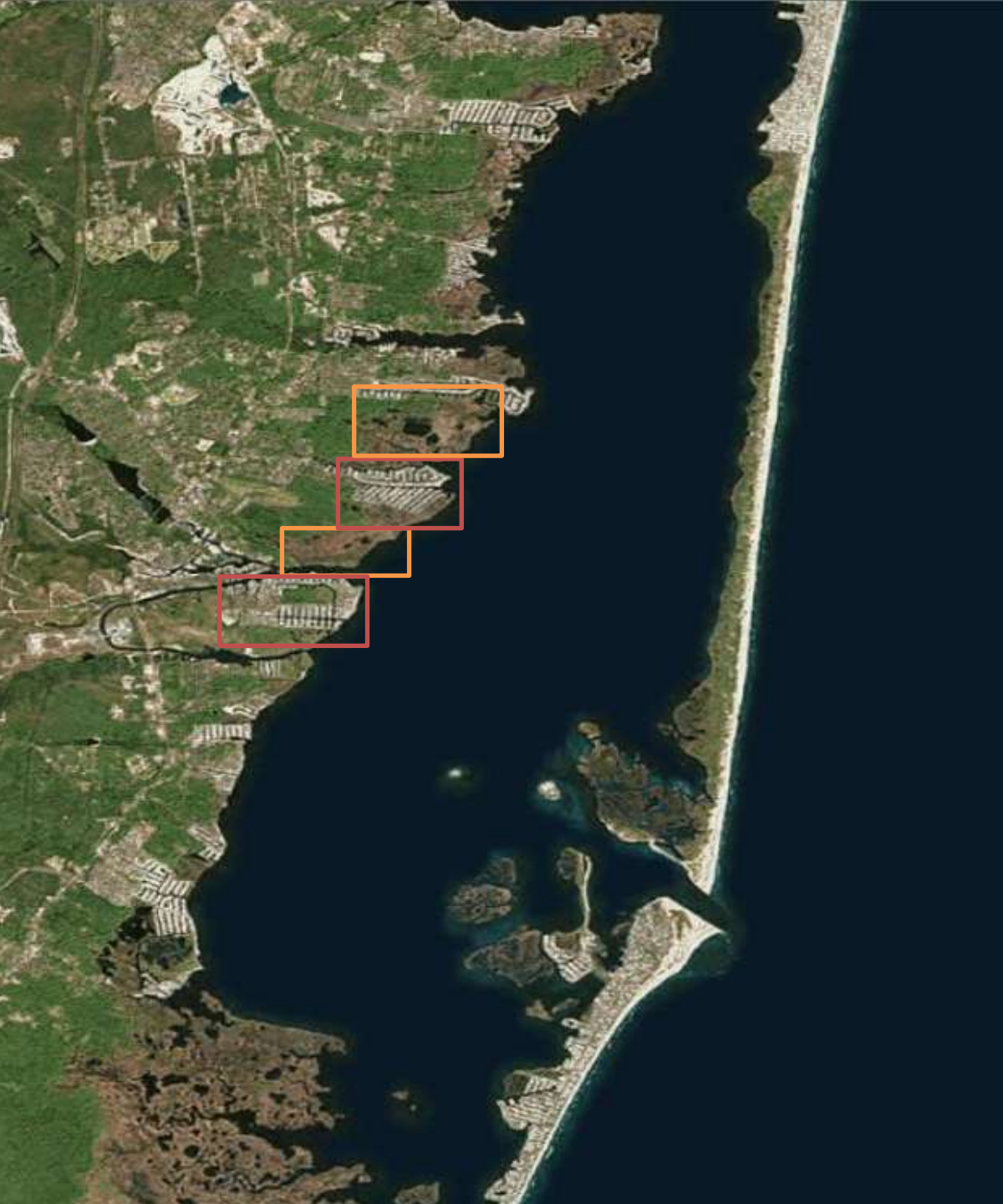


ervation in the Northeast and...











# Effect of Salt Marsh Presence on Annual Flood Losses in Ocean County, NJ

-  Behind Marsh
-  No Marsh

*Reduced damage by about **15%** over the course of approximately 2,000 storm events.*



# South Cape May Meadows Preserve

The Nature Conservancy  
Protecting nature. Preserving life.



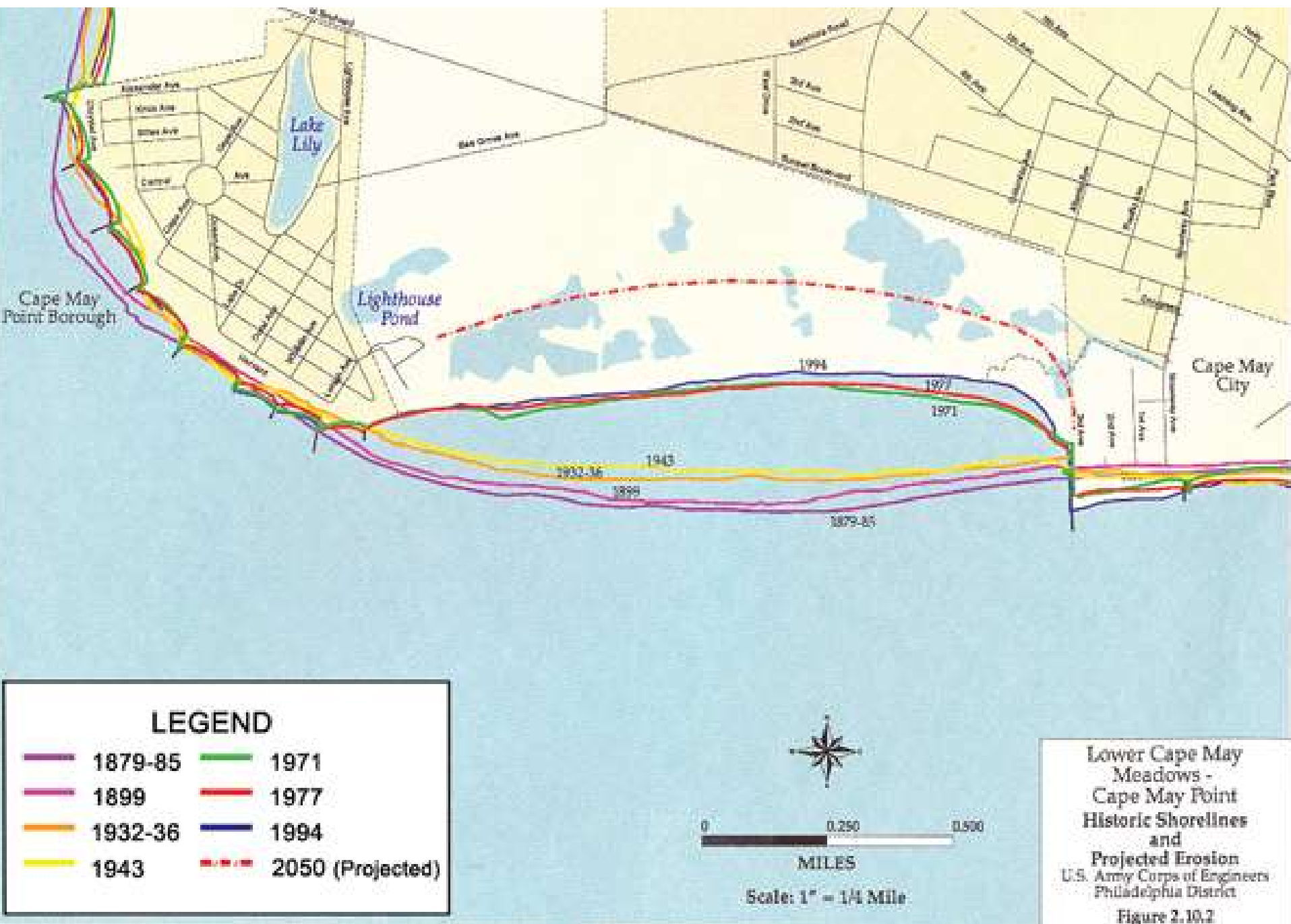
# South Cape May Meadows Preserve







The last of South Cape May after the storm of 1944.  
Photo from Summer City by the Sea.





# Before Restoration



# After Restoration









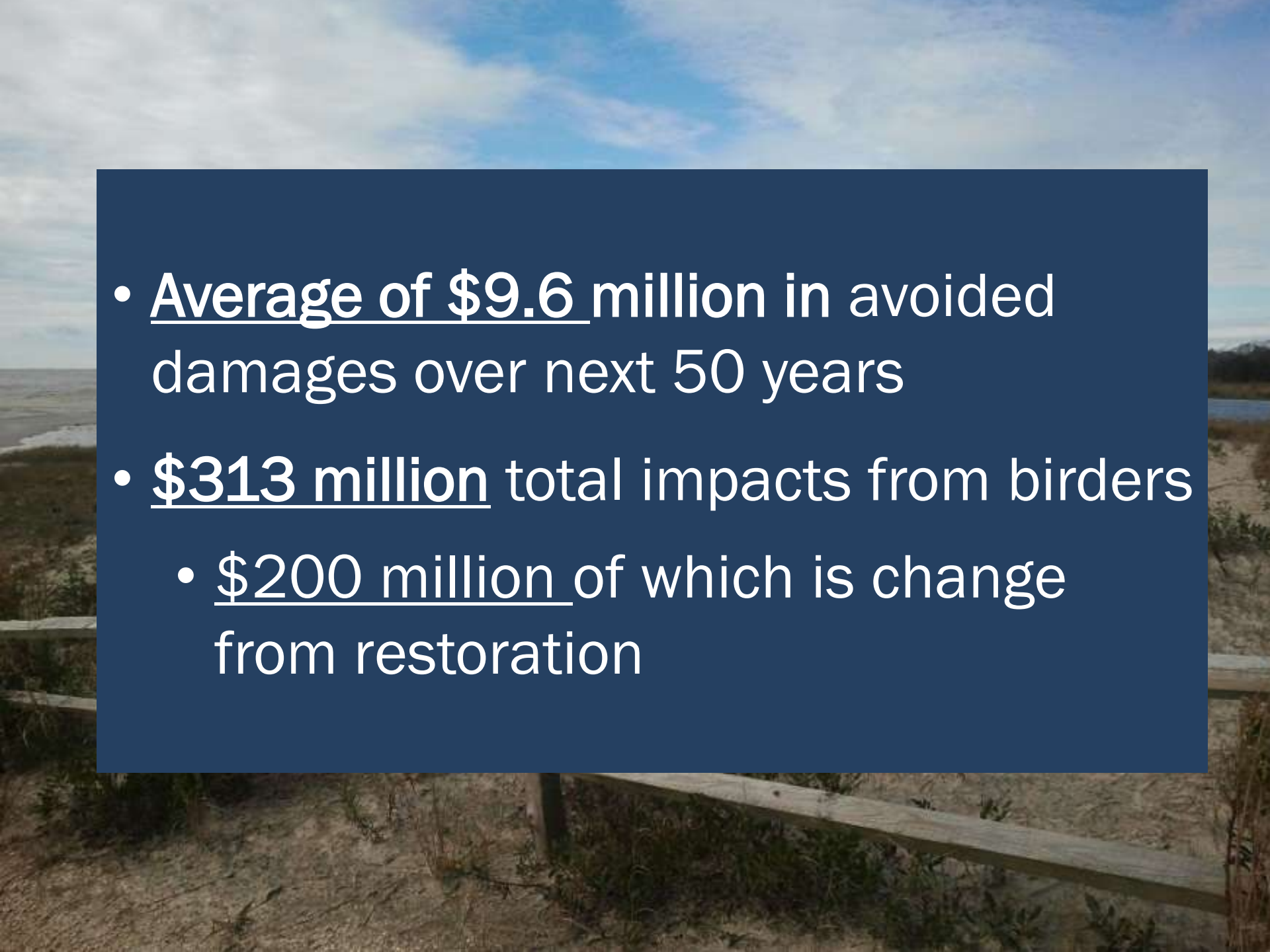






# After Superstorm Sandy



- 
- Average of \$9.6 million in avoided damages over next 50 years
  - \$313 million total impacts from birders
    - \$200 million of which is change from restoration

# Lessons Learned

- It pays to invest in nature.
- Benefits of wetlands extend beyond municipal boundaries.
- Opportunities abound.



# Thank You!

**Lloyd's Post-Sandy Study:**

<http://www.lloyds.com/coastalresilience>

**TNC's Coastal Strongholds:**

[www.nature.org/resilientcoasts](http://www.nature.org/resilientcoasts)