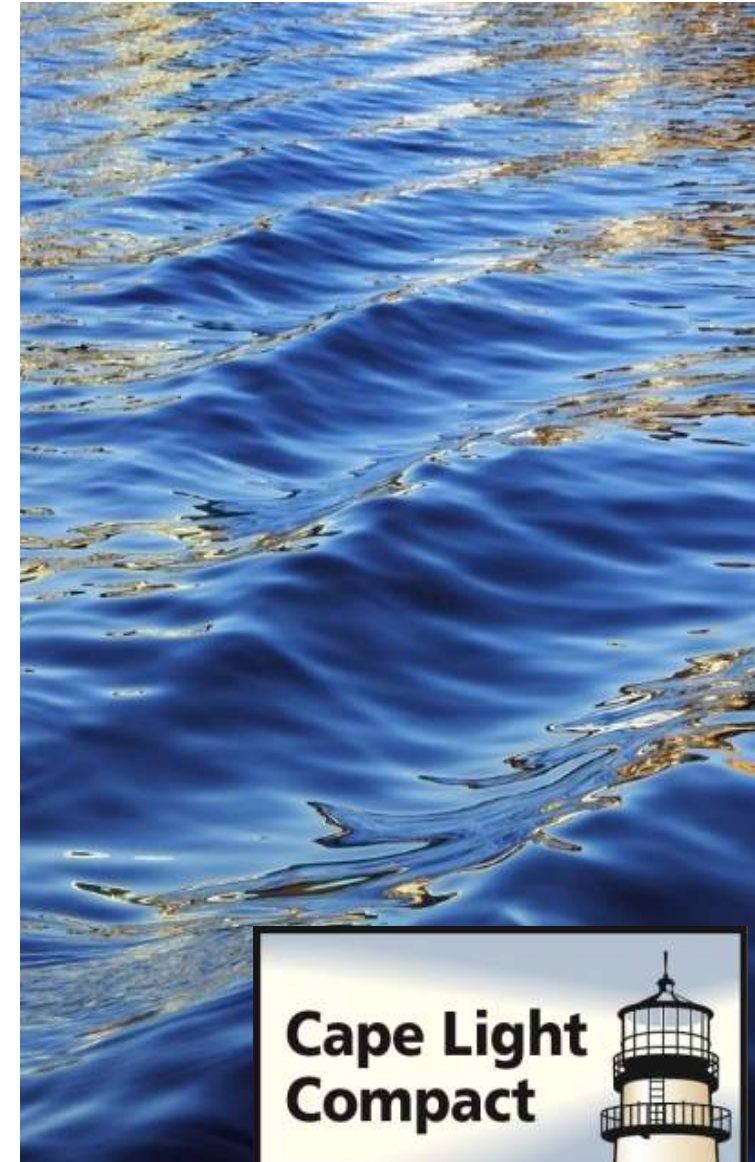


# Family Emergency Preparedness

Greg Abbe, Cape Light Compact



# Goals for Today



The Basics about Cape  
Light Compact



Test Your Energy Efficiency  
Knowledge



Opportunities for  
Improvement



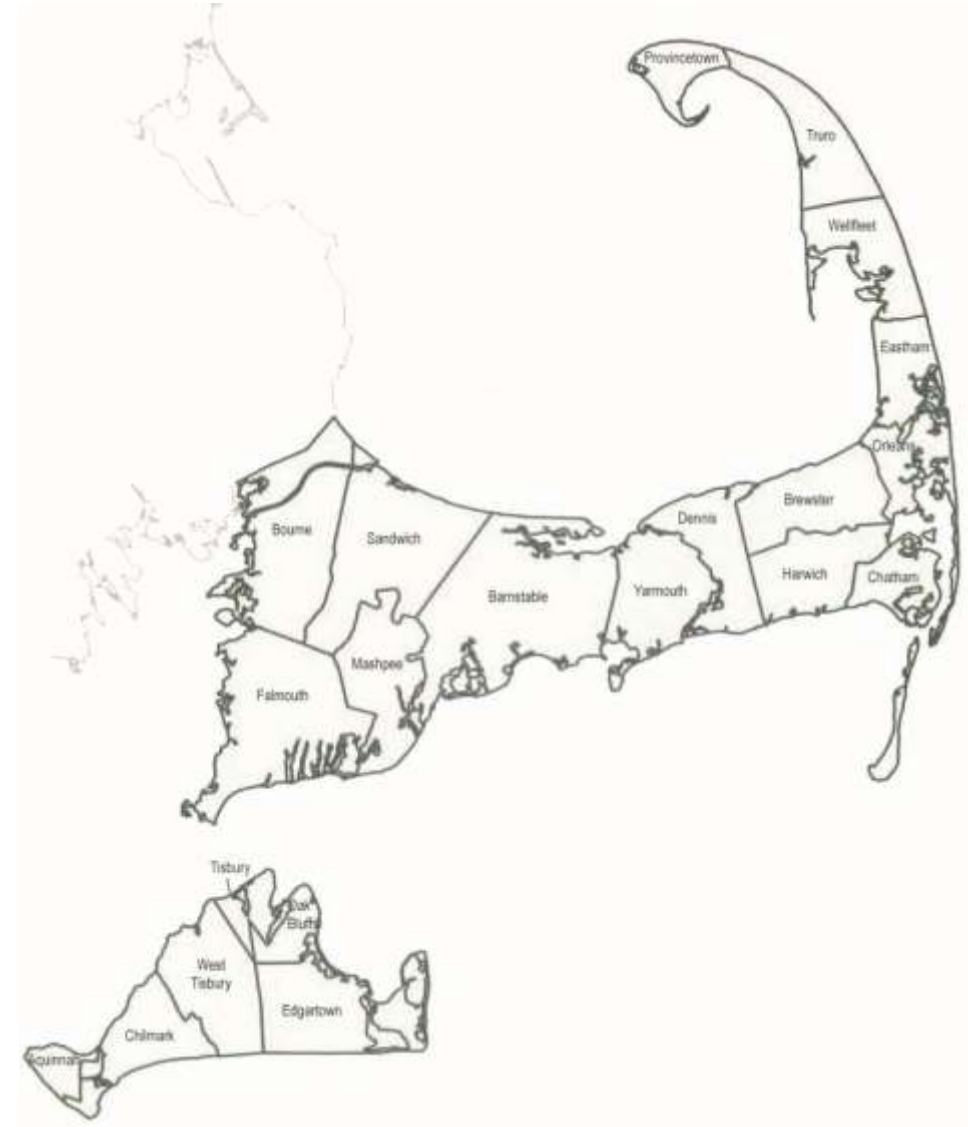


# The Basics of Cape Light Compact

Who are we?

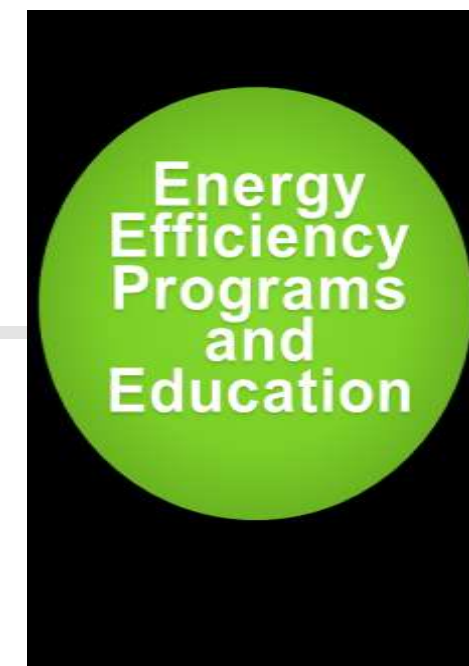


- Public Entity formed in 1997 to advance the interests in consumers in the newly restructured electric industry
- Serves the 21 towns and 2 counties encompassing Cape Cod and Martha's Vineyard
- Governing Board comprised of appointed individuals who represent each member town's interests
- Serves 200,000+ consumers on Cape Cod and Martha's Vineyard
- Office Located in the Superior Courthouse in Barnstable Village
- Administers \$100+ million annual power supply contract (Since 2003)
- Operations funded through a 'mil adder' incorporated into our customers electric bill (formerly by Barnstable County)
- Deliver a Comprehensive Approach to Energy Services



# Who is Cape Light Compact?

# Comprehensive Approach to Energy Services



# Key Acts for the Compact

- The MA Electricity Restructuring Act of 1997 enables towns and cities to establish municipal aggregators like Cape Light Compact, that could:
  1. Purchase power on behalf of all customers in the municipality
  2. Implement the rate payer funded energy efficiency programs instead of the local electric utility
- The MA Green Communities Act of 2008 established a new statewide energy efficiency planning process, impacts municipal aggregators
  1. Three-year MA Department of Public Utilities (DPU) approved Energy Efficiency Plan
  2. Significant funding increases for “all cost-effective measures”
  3. Energy Efficiency Advisory Council, Statewide Working Groups



Account Number  
1234-567-8910

Billing Date  
Jun 18, 2007

Next Read Date  
Jul 17, 2007

Service Provided to

Your Name Here

### Account Summary

Previous Bill	115.30
Payment - Thank You	-115.30
Total Delivery Charges	50.30
<b>Delivery Svcs Balance</b>	<b>\$50.30</b>

### Electricity Used

Rate 32-Residential Nonheat - Annual  
Meter 2300459  
Jun 15, 2007 Actual Read 4846  
May 16, 2007 Actual Read 4187  
30 Day Billed Use 659

2300459	KWH
06/15	659
05/16	412
04/17	509
03/16	538
02/14	539
01/15	783
12/14	714
11/14	479
10/17	435
09/18	552
08/17	1030
07/18	930
06/17	673

### Cost of Electricity

#### Delivery Services

Customer Charge			
Distribution	.04825 X	659 KWH	31.80
Transition	.01450 X	659 KWH	9.61
Transmission	.00482 X	659 KWH	3.18
Renewable Energy	.00050 X	659 KWH	0.33
Energy Conservation	.00250 X	659 KWH	1.65

Delivery Services Total

50.30

Ratepayer funding of  
Cape Light Compact  
Energy Efficiency Programs

IN THE TRANSITION  
UNDING LLC




# Who's Paying for All of This?

# Resiliency and Energy Efficiency Can Go Hand-in-Hand

- A few common concepts:
  - EE & Food Spoilage Prevention
  - EE & Generator Efficiency
  - EE & Home Comfort





# Test Your Energy Efficiency Knowledge

What's wrong with your picture?





Un-Insulated, Un-Covered Attic  
Access

What's Wrong Here...



Air Gap in Bulkhead Door

What's Wrong Here...





Half-Empty (or full) Refrigerator

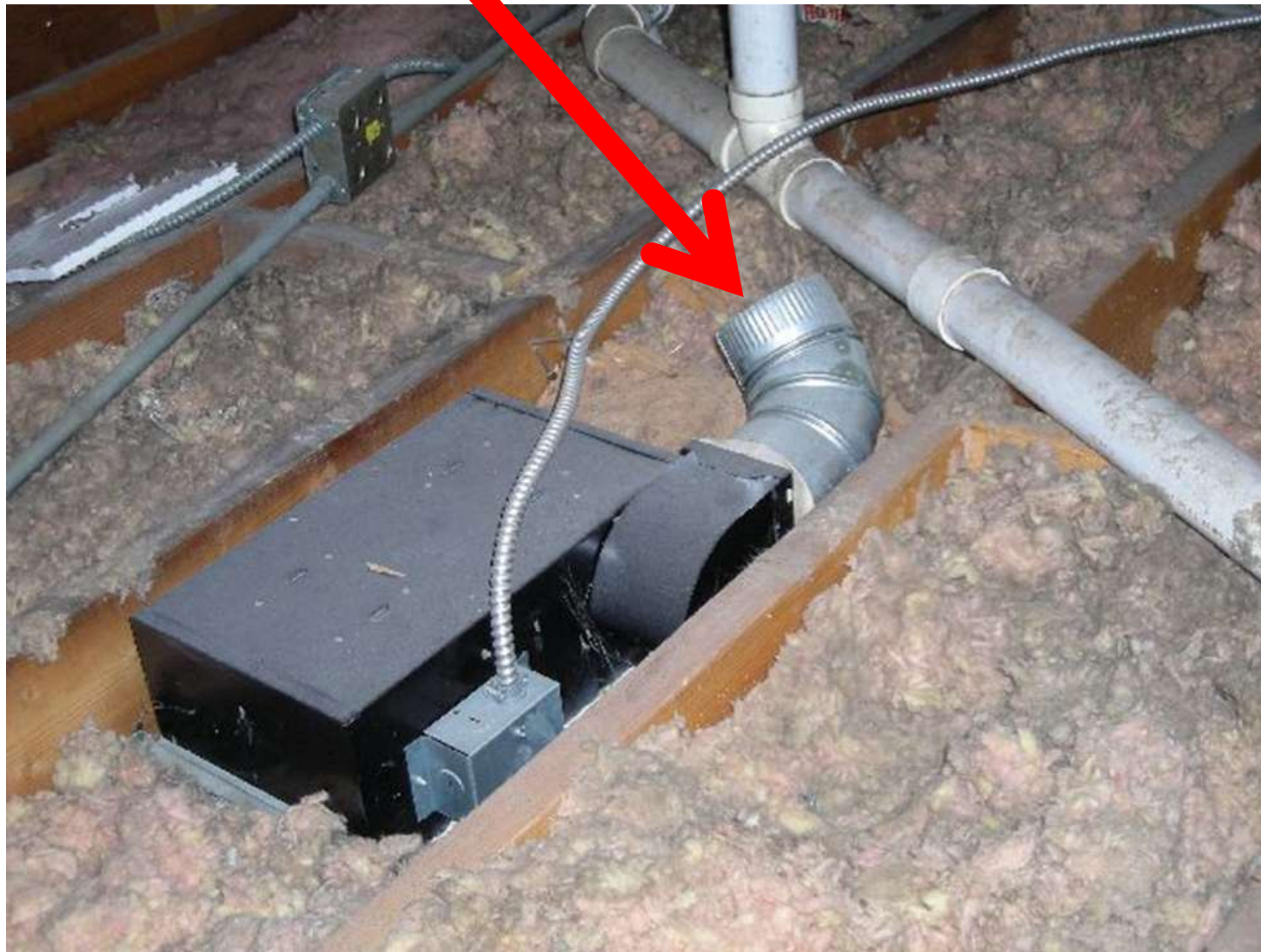
What's Wrong Here...

Air Gap Around  
Ceiling Penetrations



What's Wrong Here...

## Bath Fan Vented Directly Into Attic



What's Wrong Here...





Before...  
Chimney  
chase  
open to  
basement

After...

What's Wrong Here...



Non-continuous  
Insulation

No Contact between  
Insulation and Floor



Evidence of bulk  
moisture and mold

What's Wrong Here...



Un-  
insulated  
rim and  
band joist  
located  
above  
insulated  
foundation  
walls

What's Wrong Here...





Insulation  
removed  
from Kraft  
facing

What's Wrong Here...



Except for this  
incandescent light  
bulb

Nothing!

What's Wrong Here...





Kinked  
supply ducts

What's Wrong Here...



Duct connecting Supply and Return



What's Wrong Here...



Water  
Heater  
starting to  
deteriorate

What's Wrong Here...



Un-  
insulated  
water  
pipes

What's Wrong Here...





Skylight Framing

Recessed Ceiling Lights?

Poorly Insulated Roof Structure

What's Wrong Here...



Cold Ceiling (poorly insulated attic) collects moisture and any particles in the air, staining ceilings.

What's Wrong Here...



Poorly insulated and  
air sealed home  
creating Ice dams

What's Wrong Here...



# Cape Light Compact Free Energy Assessment

Call 1-800-797-6699 [www.capelightcompact.org](http://www.capelightcompact.org)

A qualified Energy Analyst performs an energy audit on your home using a “Whole-House” approach which includes:

- Analysis of historical energy consumption using utility bills
- Comprehensive Assessment Identifying Energy Efficiency Opportunities
- Combustion Appliance Testing (checking for safety and efficiency)
- Replacing Incandescent light bulbs with Installation of Energy Efficient Lighting
- Identification of Cost-Effective Energy Efficiency Opportunities
- Home Energy Action Plan- Providing Recommendations and energy savings projections
- Generous Incentives for recommended measures



# Home Energy Assessment

# 0% Interest HEAT Loan Program

**Up to \$25,000 with Repayment Terms up to 7 Years for Eligible Measures Including:**

\*Loan eligibility is determined by the lender. Must receive Energy Assessment

- Air Sealing, Insulation and Duct Improvements
- Domestic Hot Water Systems
- Heating Systems and Thermostat Controls
- Central Air Conditioning Systems
- Pre-Weatherization Barrier Remediation



**Now Available for Condo Owners!**



Finance your 25% co-payment  
for weatherization measures



Get rid of that old inefficient  
heating system without  
breaking the bank!



Replace your old AC system  
or  
Install one for the first time



# HEAT Loan



### 1. Chimney Balloon

**\$35 rebate** A removable, reusable, and durable device that helps to stop airflow, odor, and debris from flowing through your chimney.

### 2. Heating Systems, Controls, & Water Heaters

**\$100-1200 rebate\*** for oil & propane heating systems.

### 3. Central Air Conditioning

**\$250-500 rebate** for central cooling and minisplit heat pump systems.

### 4. Efficient Thermostats\*

limit 2 per customer (oil & propane)

**\$25 rebate** for programmable thermostat.

**Up to \$100 rebate** for Wireless Enabled thermostat.

\*Natural gas equipment related rebates are available through GasNetworks at [www.gasnetworks.com](http://www.gasnetworks.com).

\*\*Subject to lender approval.

### Cape Light Compact's Home Energy Assessment

Includes **Free replacement of inefficient light bulbs**, **Free** air sealing, and will cover 75% of the cost up to \$4,000 to install recommended insulation for eligible homes. Please call (800) 797-6699 to schedule your free home energy assessment today!  
Additional benefits for income qualified customers.

### Mass Save® HEAT Loan Program

The HEAT Loan Program provides loans up to \$25,000 with 0% interest and terms up to 7 years for approved measures.\*\* To apply for the loan you must own a one to four-family home and have a home energy assessment. To view eligibility requirements, please visit [www.capelightcompact.org/heat](http://www.capelightcompact.org/heat).

### 5. Heat Pump Water Heaters

**\$750 rebate** for qualified electric hot water replacements.

### 6. Solar Domestic Hot Water

**\$500-1500 rebate** for solar domestic hot water heating systems. Rebate amount depends on number of household members. Pre-approval required and must replace electric hot water heater.

### 7. Appliances

**\$40 rebate** for an ENERGY STAR® Room Air Cleaner.

### 8. Dehumidifier

**\$30 rebate** on ENERGY STAR® certified dehumidifiers.

### 9. Clothes Dryer

**\$50 rebate** for ENERGY STAR® certified electric clothes dryers.



[www.capelightcompact.org/ResRebates](http://www.capelightcompact.org/ResRebates)



# Thank you!

Greg Abbe  
Analyst

[Gregory.abbe@capelightcompact.org](mailto:Gregory.abbe@capelightcompact.org)

508-744-1275

