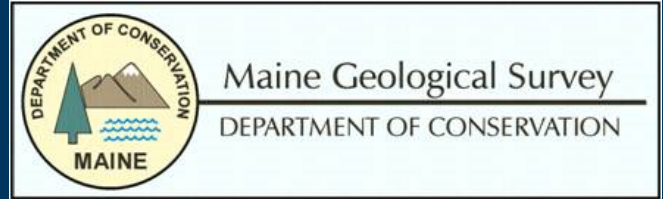


“Increasing resilience and reducing risk through successful application of nature based coastal infrastructure practices in New England”

“Living Shorelines 2.0”

Funded from the NOAA Regional Coastal Resilience Grant Program

# Partners



New Hampshire Coastal Program

And additional partners in each state.



Massachusetts Office of Coastal Zone Management

# Applying and Assessing Living Shoreline Approaches in New England

## The issue:

- Lack of data to prove effectiveness of living shoreline approaches
- Local, state, and federal policy factors



Photo:  
CapeCod.com

# Applying and Assessing Living Shoreline Approaches in New England



## The solution:

- Pilot/demo projects
- Metrics and monitoring
- Technical and policy guidance

Photo: [seagrant.noaa.gov](http://seagrant.noaa.gov)

# Expected Outcomes

- Practitioners have easy access to state of policy and practice.
- Significant increase in demonstration projects
- Regional, standardized monitoring metrics and protocols used by practitioners throughout New England
- State and federal policy recommendations to incentivize practices that have multiple benefits for people and nature
- Practitioners, decision makers, and property owners

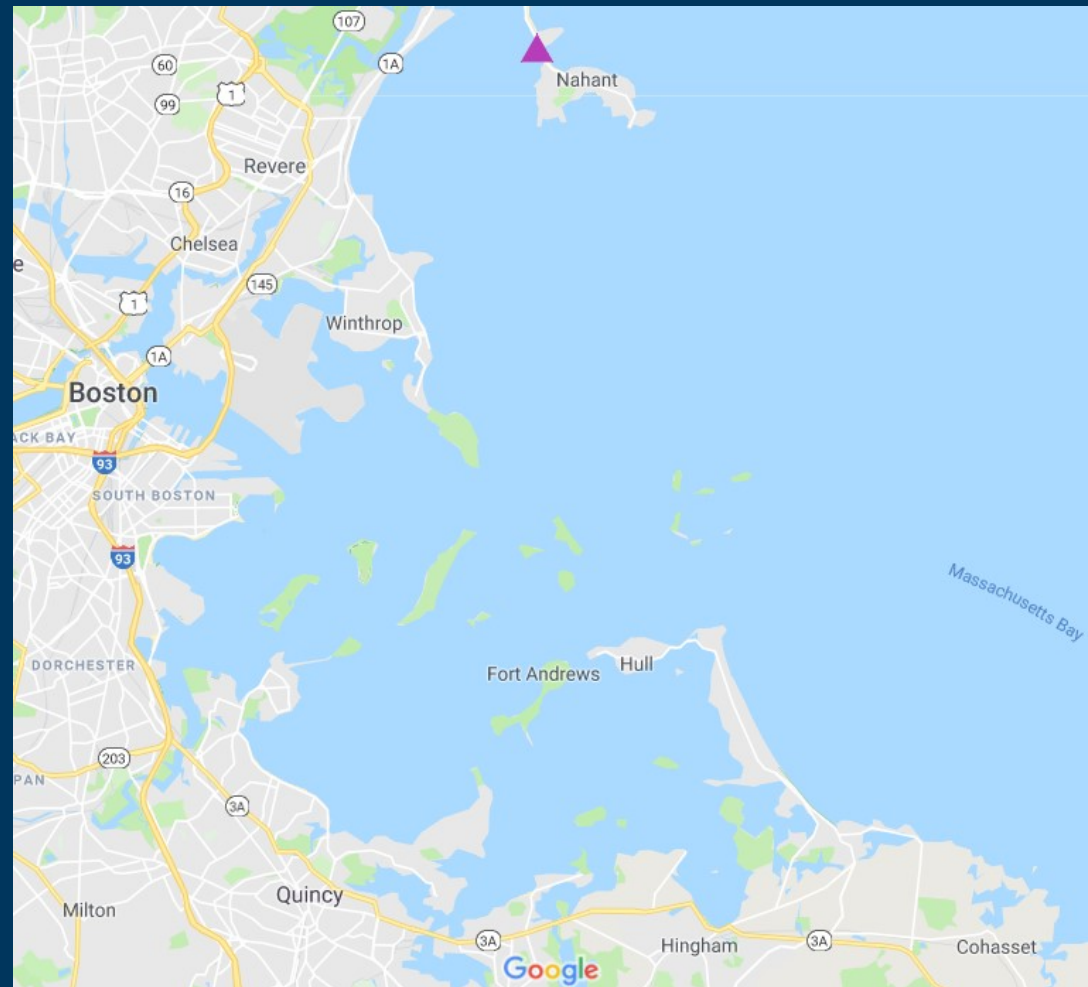
# Ongoing and Immediate Next Steps

- Literature review
- Organizing a monitoring metrics and protocols workshop at the end of May
- Siting, designing, and permitting demonstration projects
- Identifying additional monitoring sites



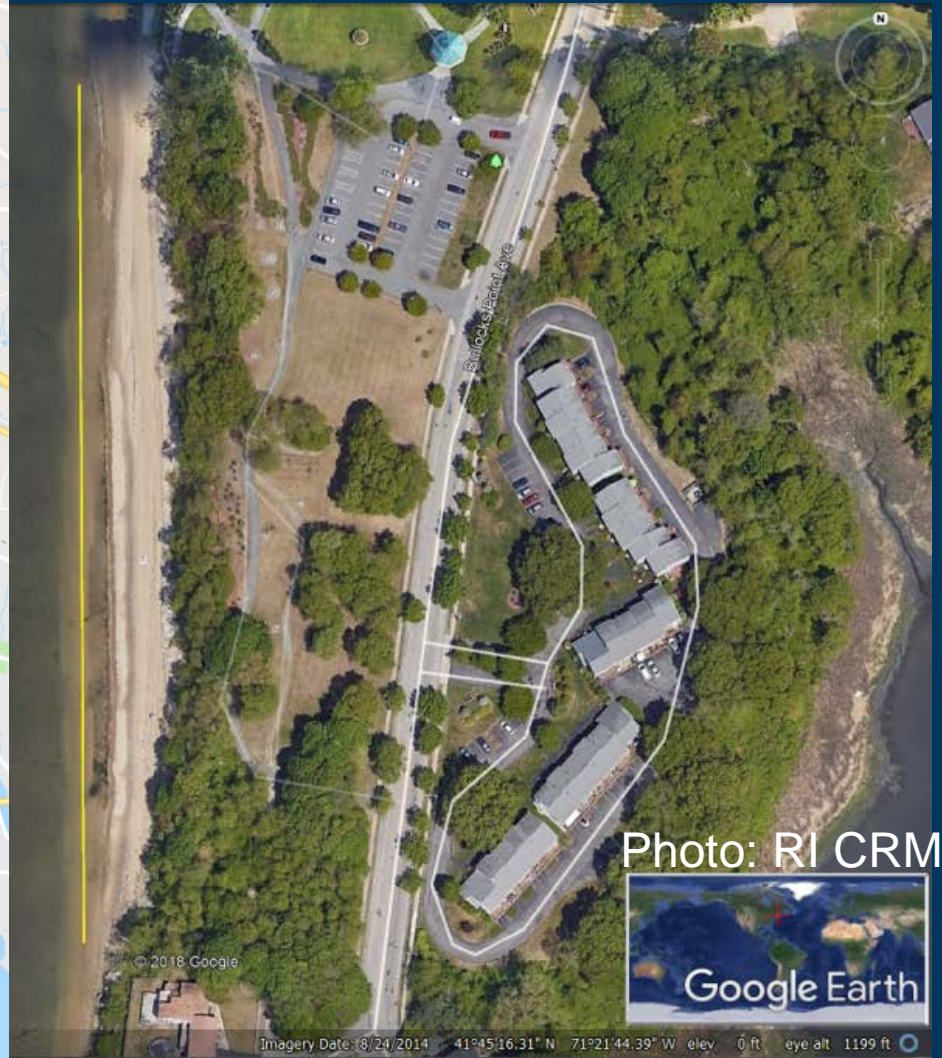
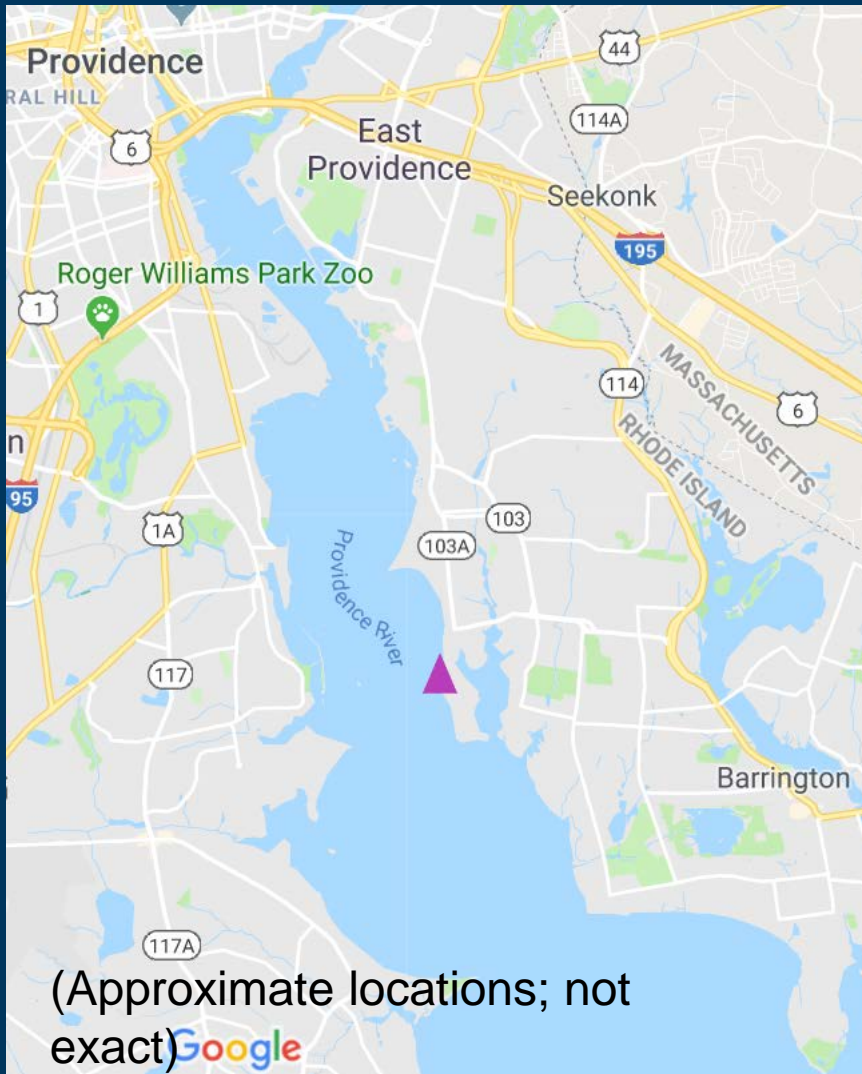
## Massachusetts

- Constructing a mixed sediment dune and beach nourishment project in Nahant
- Possibly constructing one or two additional living shorelines via the state's Coastal Resilience Grant program.



# Pilot/Demonstration Sites

## Rose Larissa Park, City of East Providence, **Rhode Island**



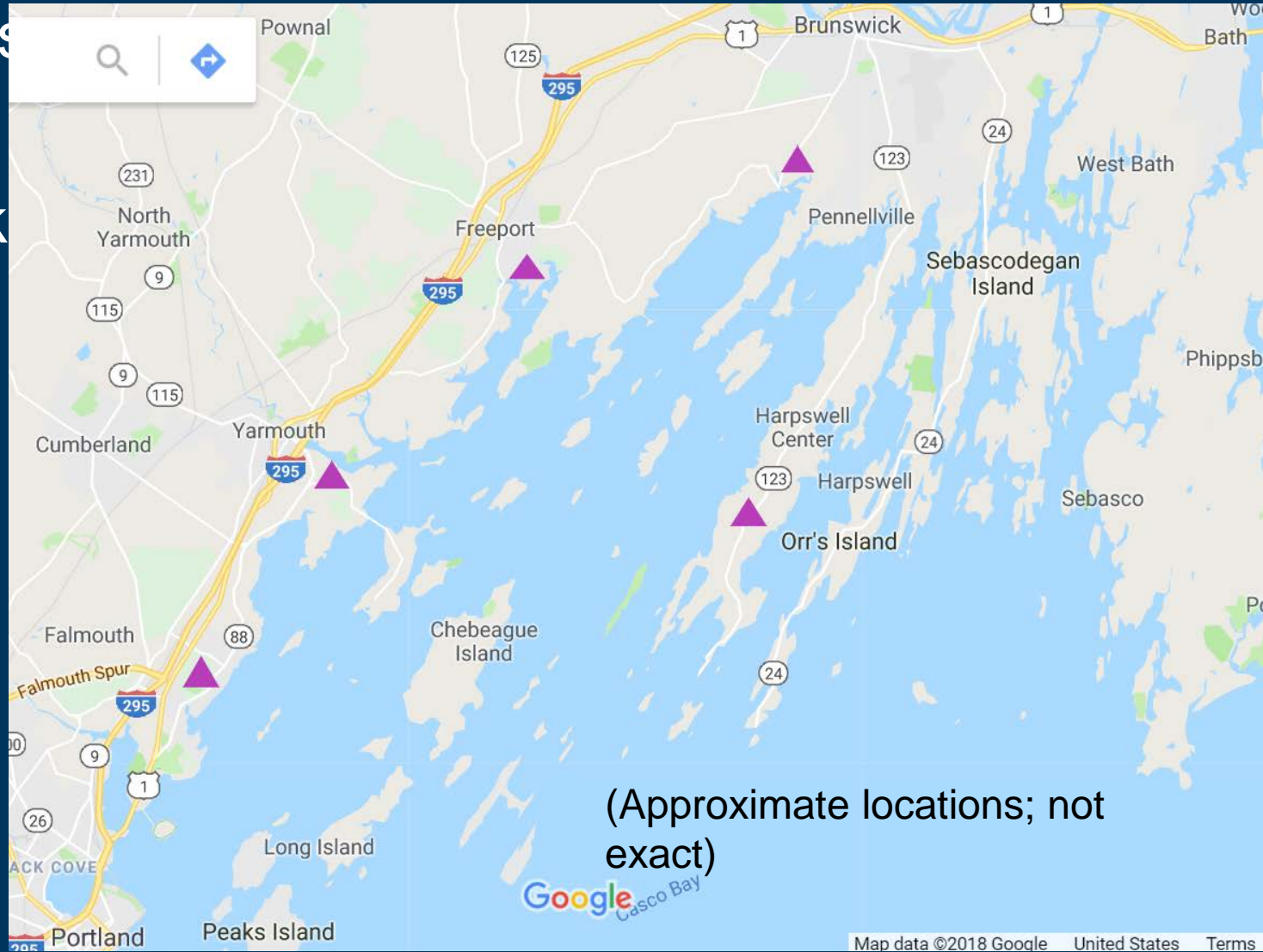


# Pilot/Demonstration Sites

## 3-4 Pilot Sites in **Maine**:

- Brunswick
- Freeport
- Harpswell
- Yarmouth
- Falmouth

With 3-4  
treatments  
per site



# ~20-30 Monitoring Sites

## New Hampshire (6)

- South Mill Pond and North Mill Pond
- Cutts Cove
- Wagon Hill Farm
- Two reference sites

## Connecticut (1 site)

- Stratford Point in Stratford, CT

## Rhode Island (1 site)

- Deep Lotions Park

## Massachusetts (3-4 sites)

- Brewster
- Plymouth
- 1-2 likely to be constructed in Kingston, Salem, or Winthrop

## Maine (11-18)

- 3-4 Pilot treatments at 3-4 sites
- Two existing green/gray treatments

**Additional sites to be identified.**

**Suggestions Welcome!**

# General Comments and Clarifying Questions



Photo:

# Participant Questions, Feedback, or Suggestions

## Questions for Participants:

1. When issuing Orders of Conditions, what monitoring metrics do you require an applicant to collect and report? How often do you require monitoring to be completed?
2. What do you need to better understand, or what additional data or information related to suitability assessments and siting, design and permitting, or construction, monitoring and maintenance would build confidence in the use of living shoreline approaches?



# Applying and Assessing Living Shoreline Approaches in New England

Eric Roberts, Coastal Resilience Specialist  
The Nature Conservancy

[eric.roberts@tnc.org](mailto:eric.roberts@tnc.org)

617.532.8318

**Please be in touch if you plan to design  
and construct a living shoreline,  
THANKS!**

# Extra Slides